

Huawei eKitEngine S110-V2 Series Switches

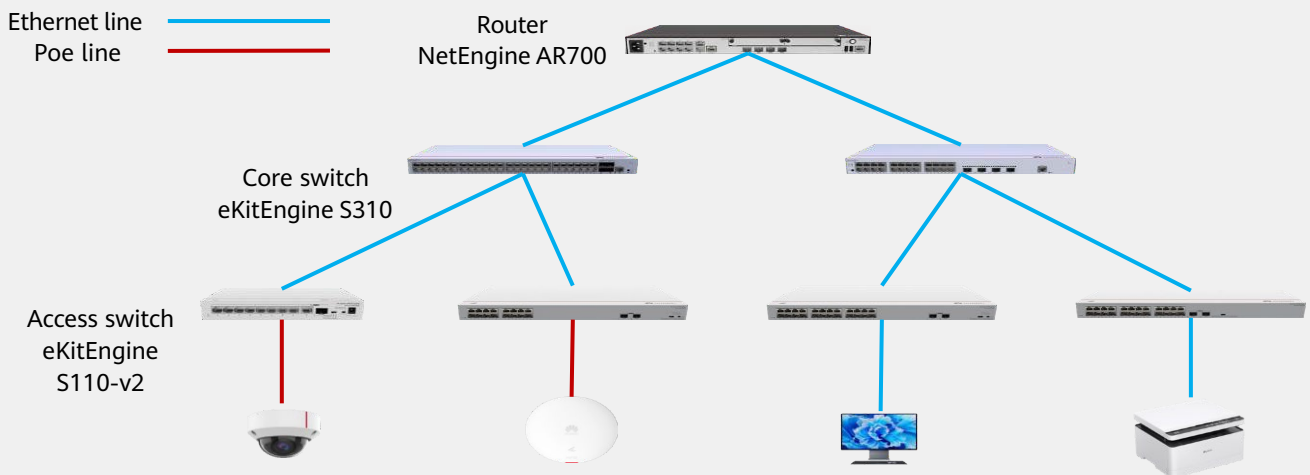


Four working modes

- standard mode
- port isolation
- port binding
- flow control disabling

plug and play

- configuration-free
- management-free



Huawei eKitEngine S110-v2 series switches (S110-v2 for short) are unmanaged switches designed for the distribution market. The whole series adopts an all-new crystal-like appearance design with great visual impacts, winning itself the German Red Dot Design Award 2022. The newly launched colorways of Silk White and Silver Frost are becoming increasingly popular. In addition, the iconic Huawei logo on eKitEngine S110-v2 series switches gives them a more refreshing look. In terms of aesthetics, a diamond cut design is employed to make the switches more elegant through an integrated and completely seamless surface with sleek corners. Therefore, eKitEngine S110-v2 series switches can be widely used in access scenarios such as SOHO enterprises, and commercial stores.

Product Features and Highlights

Ultra-Low Power Consumption

- The PoE switches use the intelligent PID algorithm for fan speed adjustment. Other models are fanless and noise-free, ensuring ultra-low power consumption. The average maximum power consumption of a single port on some models is less than 1 W, saving 30% power compared with traditional switches.

PoE Power Supply

PoE-capable models provide the following capabilities:

- Fast PoE: PoE switch can supply power to PDs within seconds upon power-on, which is different from common switches that supply power to PDs in 1 to 3 minutes after power modules are installed. When a PoE switch restarts due to a power failure, it continues to supply power to PDs as soon as it is powered on, without waiting until it completes the restart. This greatly shortens the downtime of PDs.
- Perpetual PoE: When a switch reboots, the power supply to connected PDs is not interrupted.

Rich PoE Compatibility

PoE switches are compatible with more than 100 types of non-standard PoE terminals and can supply power to common non-standard PoE terminals.

PoE Watchdog

When no traffic is detected from the camera connected to the PoE switch, the associated PoE port will perform a power-cycle to reboot the camera and ensure proper operation.

Product Specifications

Specifications	eKitEngine S110-4P1T-BU-V2	eKitEngine S110-8P2T-BU-V2
Switching capacity	10 Gbps	20 Gbps
Packet forwarding rate	7.44 Mpps	14.88 Mpps
Device port	4 x 10/100/1000BASE-T ports(PoE+) 1 x GE electrical port	8 x 10/100/1000BASE-T ports(PoE+) 2 x GE electrical ports
MAC address entry	4K MAC address entries	4K MAC address entries
Dimensions (H x W x D)	230.0mm×49.5mm×29.0mm	230.0mm×49.5mm×29.0mm
Weight(without packaging)	0.62 kg	0.82 kg
Power adapter	Input: 100–240 V AC; 50/60 Hz Power adapter output: 56 V DC	Input: 170 V AC to 240 V AC; 50/60 Hz Output: 54 V DC
Maximum power consumption	Without PoE: 3.9 W Full PoE load: 61.6 W (PoE: 54 W)	Without PoE: 6.9 W Full PoE load: 140 W (PoE: 124 W)

Long-term operating temperature	0°C to 40°C (0 m to 1800 m)	0°C to 45°C (0 m to 1800 m)
Storage temperature	-40°C to +70°C	-40°C to +70°C
Operating humidity	5% to 95%	5% to 95%
Working mode	Port Status, PoE Status	Port Status, PoE Status
Heat dissipation mode	Fanless, natural heat dissipation	Fanless, natural heat dissipation

Specifications	eKitEngine S110-8PST-V2	eKitEngine S110-8T2ST-V2
Switching capacity	20 Gbps	20 Gbps
Packet forwarding rate	14.88 Mpps	14.88 Mpps
Device port	8 x 10/100/1000BASE-T ports(PoE+) 1 x GE electrical port, 1 x GE SFP port	8 x 10/100/1000BASE-T ports 1 x GE electrical port, 1 x GE SFP port
MAC address entry	4K MAC address entries	4K MAC address entries
Dimensions (H x W x D)	35 mm x 210 mm x 130 mm	35 mm x 210 mm x 130 mm
Weight(without packaging)	0.91 kg	0.46 kg
Power adapter	Input: 100–240 V AC; 50/60 Hz Output: 12 V DC	Input: 100–240 V AC; 50/60 Hz Output: 12 V DC
Maximum power consumption	Without PoE: 8.4 W With PoE: 142 W (PoE: 124 W)	8.2 W
Long-term operating temperature	0°C to 40°C (0 m to 1800 m)	0°C to 45°C (0 m to 1800 m)
Storage temperature	-40°C to +70°C	-40°C to +70°C
Operating humidity	5% to 95%	5% to 95%
Working mode	Standard Mode, Port Isolation, Ports 1 to 4: 10Mbps	Standard Mode, Port Isolation, Flow Control Disabling
Heat dissipation mode	Fanless, natural heat dissipation	Fanless, natural heat dissipation